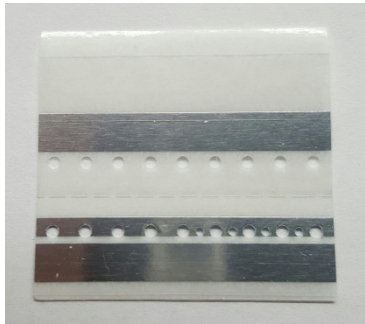




SMT Double Splice Tape (Silver)



SR.1308.1X



SR.1332.1

Designed for Fuji SMT placement machines. Alignment is done without tools or special fixtures using the pre-spaced holes. Available in 8mm - 56mm carrier tape widths.

PART NUMBER	DESCRIPTION	APPLICATION	QUANTITY
SR.1308.1X	SMD Double Splice Tape - 8mm Silver with small and large alignment holes	Used with 8mm carrier tapes	Box of 500
SR.1312.1	SMD Double Splice Tape - 12mm Silver with large alignment holes	Used with 12mm carrier tapes	Box of 500
SR.1316.1	SMD Double Splice Tape - 16mm Silver with large alignment holes	Used with 16mm carrier tapes	Box of 500
SR.1324.1	SMD Double Splice Tape - 24mm Silver with large alignment holes	Used with 24mm carrier tapes	Box of 250
SR.1332.1	SMD Double Splice Tape - 32mm Silver with large alignment holes	Used with 32mm carrier tapes	Box of 250
SR.1344.1	SMD Double Splice Tape - 44mm Silver with large alignment holes	Used with 44mm carrier tapes	Box of 250
SR.1356.1	SMD Double Splice Tape - 56mm Silver with large alignment holes	Used with 56mm carrier tapes	Box of 250